

WIT – 4-BANK CHROMIUM-6 REMOVAL SYSTEM

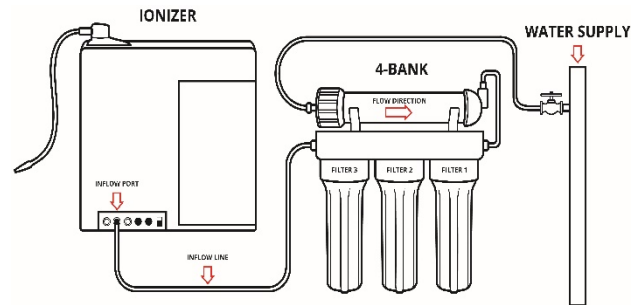
Installation & Replacement Filter Instructions

NEW INSTALLATION:

Step 1 :: Refer to diagram for general system placement. *The dimensions of the system are 15" long x 15" high x 5" wide.*

Step 2 :: Turn off the cold water supply.

Step 3 :: Connect flexible hosing from the cold water supply to the inflow port on the Top Fluoride Pre-Filter of the system. Make sure to leave enough slack of hosing for additional maneuverability during future filter replacement. **Note water flow direction from Fluoride Pre-Filter to Stage 1 to Stage 2 to Stage 3.**



Step 4 :: Connect hosing to the outflow port on the Stage 3 side of the system.

Step 5 :: **Temporarily run the outflow hosing to a sink, pan or bucket and flush the system with 4 gallons of water BEFORE using (to remove any loose residue or particles from the filters). Do this by turning on the cold water supply.**

Step 6 :: After flushing the system and turning off the cold water supply, connect the hosing from the outflow port of the system to the inflow port of the ionizer.

Step 7 :: Turn the cold water supply back on and **check for leaks** before leaving installation.

FILTER CARTRIDGE REPLACEMENT:

Step 1 :: Turn off the cold water supply.

Step 2 :: If present, depress pressure release button to relieve pressure in filter housing. Fluoride Pre-Filter is self contained unit and just snaps into place, after removing outflow and inflow hoses, remove filter and replace with new. Install hoses in proper ends.

Step 3 :: Unscrew housing for each Stage filter using provided spanner wrench. **Note that when opening filter housing to change the filter cartridges, it is common for O-ring to lift out of housing and stick to the filter housing base-cap.**

Step 4 :: Remove used cartridges and discard. Rinse out each housing and fill about 1/3 full with water. Add about 2 to 3 tablespoons of bleach and scrub thoroughly with brush or sponge. Rinse thoroughly.

Step 5 :: Remove O-ring from the groove of each base-cap. Wipe the groove and O-ring clean. **It is then recommended to lubricate each O-ring with coating of clean silicone grease, vaseline, or similar.** Place O-ring back in place of each base-cap and press O-ring down into the groove with two fingers. **Note that this step is important to ensure proper filter seal so be sure the O-ring is seated level in the base-cap groove. If O-ring appears damaged or crimped it should be replaced at this time.**

Step 6 :: Insert the (3) filter cartridges into the corresponding Stage housing. Make sure each filter slips over the stand-pipe.

Step 7 :: Screw each filter housing onto the base-cap and be sure the filter cartridge slips over the base-cap stand-pipe. Hand tighten first and then use the included spanner wrench to then tighten an additional 1/4 - 1/2 turn. The housing should be "snug" but **DO NOT OVER-TIGHTEN.**

Step 8 :: If you haven't already, make sure that the outflow hosing from the system is disconnected from the inflow port of the ionizer. Then, **temporarily run the outflow hosing to a sink, pan or bucket and flush the system with 4 gallons of water BEFORE using (to remove any loose residue or particles from the filters). Do this by turning on the cold water supply.**

Step 9 :: After flushing the system and turning off the cold water supply, connect the hosing from the outflow port of the system to the inflow port of the ionizer.

Step 10 :: Turn the cold water supply back on. If present, depress the pressure release button to release trapped air from filter. Then, **check for leaks** before leaving installation.

The replacement filter cartridges have a limited service life of approximately 6 months (700 gallons). Change the filters every 6 months, or if you notice changes in taste, color or flow of the water being filtered.